

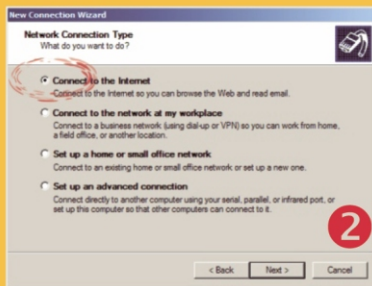


UPUTSTVO ZA POVEZIVANJE

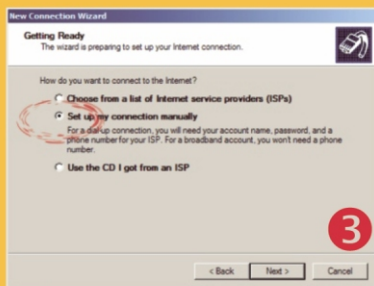




Start » Control Panel » Network Connections
Pokrenite Create a new connection u meniju Network Tasks, pojaviće se New Connection Wizard, kliknite na Next.



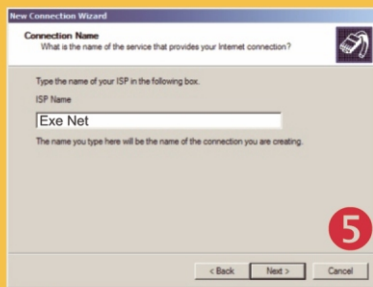
Izaberite opciju **Connect to the Internet**, kliknite na Next.



Izaberite opciju **Set up my connection manually**, kliknite na Next.



Izaberite opciju **Connect using a broadband connection that requires username and password**, kliknite na Next.



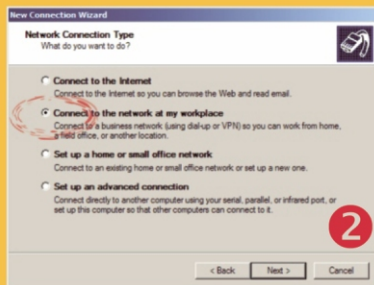
U polje **ISP Name** unesite Exe Net, kliknite Next.



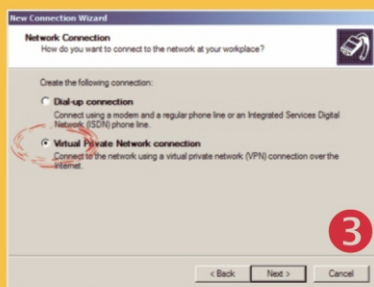
U polje **Username** unesite Vaše korisničko ime, u polje **Password** unesite lozinku, u polje **Confirm password** ponovo unesite lozinku, kliknite Next.



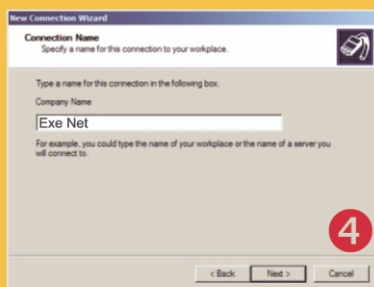
Start » Control Panel » Network Connections
Pokrenite Create a new connection u meniju Network Tasks, pojaviće se New Connection Wizard, kliknite na Next.



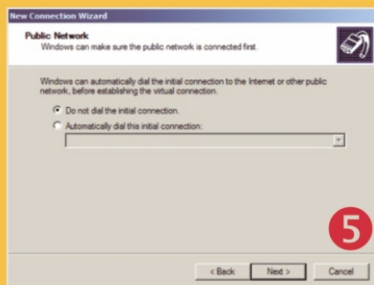
Izaberite opciju **Connect to the network at my workplace** kliknite na Next.



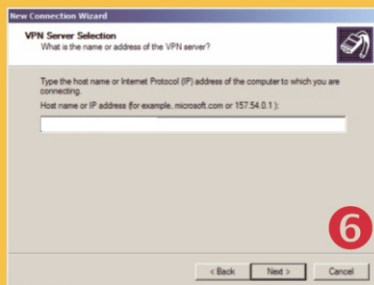
Izaberite opciju **Virtual Private Network connection**, kliknite na Next.



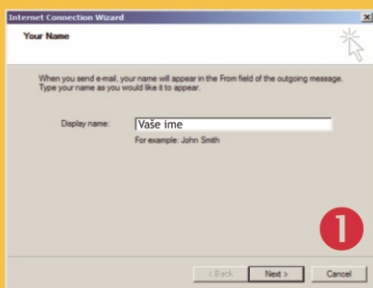
U polje **Company Name**, unesite **Exe Net** kliknite na Next.



Izaberite opciju, **Do not dial the initial connection** kliknite Next.

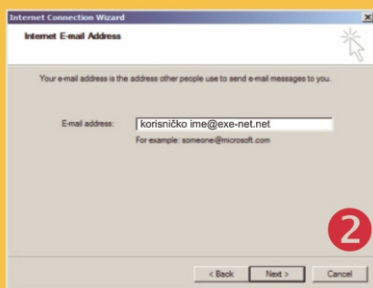


Za unošenje podataka u polje **IP address**, pozovite **Exe Net** tehničku podršku kliknite Next.



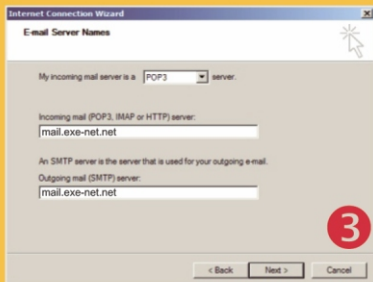
1

Start » Programs » Outlook express
Tools » Accounts » Mail » Add
U polje Display name:
unesite Vaše Ime i prezime
kliknite na Next.



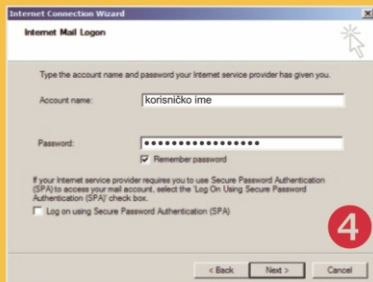
2

U polje E-mail address
unesite Vašu e-mail adresu:
korisničko ime@exe-net.net
kliknite na Next.



3

U polje Incoming mail unesite:
mail.exe-net.net
U polje Outgoing mail unesite:
mail.exe-net.net,
kliknite na Next.




4


U polje Account name unesite
Vaše korisničko ime
U polje Password unesite
Vašu lozinku,
kliknite na Next.

Exe Net Advertising

tehnička podrška
+381 (0)18 20 20 00

podrska@exe-net.net
www.exe-net.net


dodajte Exe Net podršku u MSN messenger
kontakt: podrska@exe-net.net


dodajte Exe Net podršku u Skype
kontakt: exe.net

 MESSENGER
dodajte Exe Net podršku u Yahoo messenger
kontakt: exenetpodrska@yahoo.com